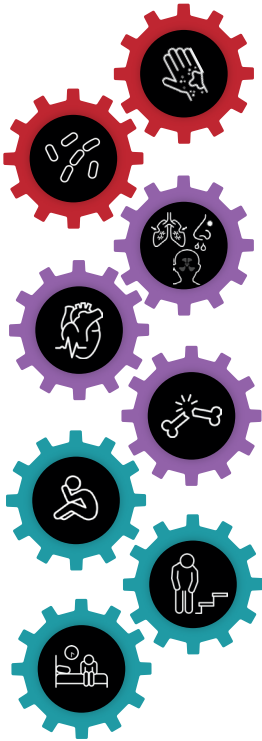




The Burden of AD: More Than Skin Deep

Underlying type 2 inflammation contributes to a multidimensional disease burden within and beyond the skin in patients of all ages with AD¹⁻⁸



Skin Signs and Symptoms^{1,2}
visible lesions • intense itch
• skin infections

Extracutaneous Health Conditions^{3,4,6-8}
atopic comorbidities • poor bone health • cardiovascular disease • sleep disturbances
• mental health effects

QOL and Family Impact^{3,5}
impaired QOL • productivity
• impact on daily activities
• social isolation

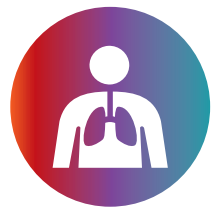
Atopic comorbidities



Allergic rhinitis^{9,10}



Conjunctivitis^{9,10}

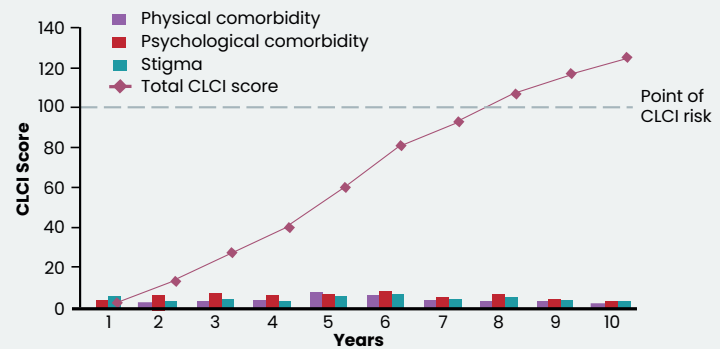


Asthma^{9,10}



Food allergies⁹

59%–78% of patients ≥12 years of age with moderate-to-severe AD in real-world studies had ≥1 atopic comorbidity^{9,10}



Even when an individual is performing well according to individual component measures, they may still have significant life course impairment due to the cumulative impact of past events¹¹

As seen with another chronic inflammatory skin disease with both physical and psychological comorbidities, and stigma, even when an individual is performing well on individual component measures, they may still have significant cumulative life course impairment.
AD, atopic dermatitis; CLCI, cumulative life course impairment; QOL, quality of life.
1. Beck LA, et al. *JID Innov.* 2022;2:100131. 2. Haddad EB, et al. *Dermatol Ther (Heidelb)*. 2022;12:1501–1533. 3. Cameron S, et al. *Allergy*. 2023;00:1–11. doi:10.1111/all.15818. 4. Hou A, Silverberg JI. *Pediatr Dermatol*. 2021;38:606–612. 5. Fasseeh AN, et al. *Dermatol Ther (Heidelb)*. 2022;12:2653–2668. 6. Geba GP, et al. *J Allergy Clin Immunol*. 2023;151:756–766. 7. Wan J, et al. *J Allergy Clin Immunol Pract*. 2023;11:3123–3132. 8. Wu D, et al. *Ann Transl Med*. 2021;9:40. 9. Calzavara-Pinton P, et al. *Adv Ther*. 2023;40:5366–5382. 10. Simpson EL, et al. *Dermatol Ther (Heidelb)*. 2024;14:261–270. 11. Kimball AB, et al. *J Eur Acad Dermatol Venerol*. 2010;24:989–1004.



ADVENT is a breakthrough educational program bringing together different specialties treating patients with type 2 inflammatory diseases.

Prof. Thomas Bieber, Dermatologist, Germany



What is the ADVENT program?

ADVENT is a global medical education program that shares the latest evidence on diseases with underlying type 2 inflammation

Areas covered include:

DERMATOLOGY

Atopic dermatitis
Prurigo nodularis
Chronic spontaneous urticaria
Bullous pemphigoid

PULMONOLOGY

Asthma
Chronic obstructive pulmonary disease

RHINOLOGY

Chronic rhinosinusitis with nasal polyps

GASTROENTEROLOGY

Eosinophilic esophagitis



Inform patient care



Facilitate cross-specialty knowledge sharing



Educate on implications of underlying type 2 inflammation



Increase the knowledge of diseases driven by underlying type 2 inflammation

What does ADVENT have to offer?

ADVENT materials were developed by Sanofi and Regeneron in collaboration with:



More than 120 experts from more than 15 countries



Specialists in **allergy, dermatology, gastroenterology, otolaryngology, and respiratory medicine**

The ADVENT program provides:



On-demand events



Expert presentations



Self-guided educational resources



Expert interviews



Infographics



Activities adapted for local needs and languages



STAY IN THE KNOW ABOUT THE EVOLVING SCIENCE OF TYPE 2 INFLAMMATION
For more information visit ADVENTprogram.com